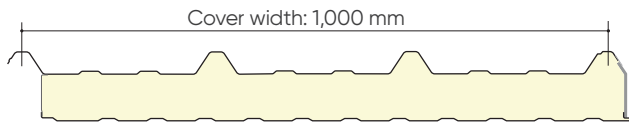
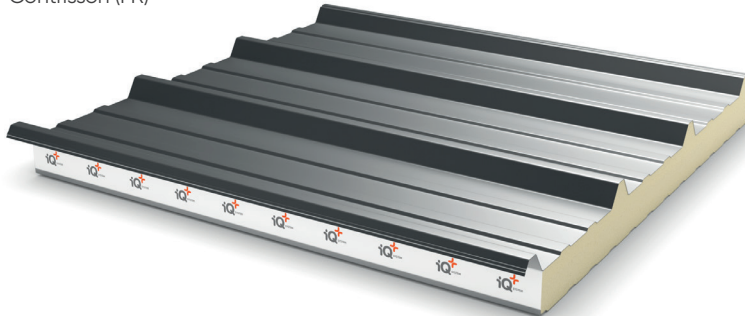


# Ondatherm<sup>®</sup> T iQ+



## Roof composite panel

Contrisson (FR)




### Characteristics of the panel

		NOMINAL CORE THICKNESSES (mm)			
		80	100	120	140
Dimensions	Thickness of outside (mm)	0.60			
	Thickness of inside (mm)	0.40			
	Overall length (mm)	Minimum 2,500 / Maximum 16,000 Shorter lengths up to 200 mm are available on request.			
	Defoaming (mm)	50 - 100 - 150 - 200 - 300			
Weight (kg/m <sup>2</sup> )	Ex. in standard thicknesses <b>0.60 / 0.40 mm</b>	12.39	13.19	13.99	14.79
Reaction to fire	Euroclass according to NF EN 13501-1	<b>B-s1,d0<sup>(1)</sup></b>			
Thermal Performance	Thermal resistance Rc (m <sup>2</sup> .K/W)	4.33	5.45	6.54	7.64
	Thermal transmittance Uc (W/m <sup>2</sup> .K)	0.222	0.178	0.149	0.128
	Linear heat loss ψ (W/m.K)	0.003	0.003	0.002	0.002
Insulation iQ+ System	Density (kg/m <sup>3</sup> )	40 (± 5 kg/m <sup>3</sup> )			

<sup>(1)</sup> Excluding Keyron coating on the inside face for internal fire performance

## Table of use

Permissible spans in metres for cladding thicknesses **0.60 / 0.50** mm for panels fixed at each top of rib and on all supports with a  $P_k/\gamma_m$  of fixings  $\geq 0.37$  kN

	2 SUPPORTS 							Span (kN/m <sup>2</sup> )	3 SUPPORTS 							
	Thickness of the panel (mm)								Thickness of the panel (mm)							
	30	40	50	60	80	100	120 & 140		30	40	50	60	80	100	120 & 140	
Pressure	3.81	4.11	4.41	4.70	5.65	6.50*	7.00*	0.50	4.81	5.35	5.40	6.00	6.50*	6.50*	7.00*	Pressure
Underpressure	4.19	4.51	4.84	5.16	6.20*	6.50*	7.00*		5.29	5.40	5.40	6.00	6.50*	6.50*	7.00*	Underpressure
Pressure	3.61	3.89	4.17	4.45	5.35	6.24*	6.86*	0.60	4.54	5.05	5.40	6.00	6.50*	6.50*	7.00*	Pressure
Underpressure	4.19	4.51	4.84	5.16	6.20*	6.50*	7.00*		4.80	5.39	5.40	6.00	6.50*	6.50*	7.00*	Underpressure
Pressure	3.43	3.70	3.97	4.24	5.09	5.95	6.54*	0.70	4.32	4.80	5.29	5.77	6.50*	6.50*	7.00*	Pressure
Underpressure	4.19	4.51	4.84	5.16	6.20*	6.50*	7.00*		4.39	4.92	5.40	5.99	6.50*	6.50*	7.00*	Underpressure
Pressure	3.29	3.54	3.80	4.06	4.88	5.70	6.26*	0.80	4.13	4.59	5.05	5.51	6.39*	6.50*	7.00*	Pressure
Underpressure	4.19	4.51	4.84	5.16	6.20*	6.50*	7.00*		4.07	4.56	5.05	5.54	6.19*	6.50*	6.98*	Underpressure
Pressure	3.16	3.41	3.65	3.90	4.69	5.48	6.02*	0.90	3.97	4.41	4.84	5.28	6.11*	6.50*	7.00*	Pressure
Underpressure	4.19	4.51	4.84	5.09	5.99	6.50*	7.00*		3.81	4.26	4.72	5.18	5.64	6.10*	6.14*	Underpressure
Pressure	3.05	3.29	3.52	3.76	4.52	5.29	5.81	1.00	3.83	4.24	4.66	5.07	5.84	6.50*	7.00*	Pressure
Underpressure	4.10	4.33	4.56	4.79	5.64	6.48*	6.84*		3.59	3.99	4.40	4.80	5.13	5.45	5.47	Underpressure
Pressure	2.94	3.18	3.41	3.64	4.38	5.11	5.62	1.10	3.70	4.09	4.49	4.89	5.61	6.33*	6.79*	Pressure
Underpressure	3.89	4.11	4.33	4.55	5.35	6.14*	6.18*		3.30	3.64	3.98	4.32	4.62	4.92	4.94	Underpressure
Pressure	2.84	3.07	3.30	3.54	4.25	4.96	5.45	1.20	3.54	3.93	4.33	4.72	5.40	6.08*	6.52*	Pressure
Underpressure	3.71	3.92	4.13	4.33	4.97	5.61	5.63		3.00	3.31	3.62	3.93	4.21	4.49	4.50	Underpressure
Pressure	2.75	2.98	3.21	3.44	4.12	4.81	5.29	1.30	3.39	3.78	4.17	4.56	5.21	5.85	6.28*	Pressure
Underpressure	3.56	3.75	3.95	4.15	4.65	5.15	5.17		2.75	3.03	3.32	3.60	3.86	4.12	4.14	Underpressure
Pressure	2.67	2.90	3.12	3.35	4.01	4.68	5.15	1.40	3.26	3.64	4.02	4.39	5.02	5.65	6.07*	Pressure
Underpressure	3.42	3.61	3.80	3.99	4.37	4.76	4.78		2.54	2.80	3.06	3.32	3.57	3.81	3.82	Underpressure
Pressure	2.59	2.82	3.04	3.27	3.91	4.56	5.01	1.50	3.15	3.51	3.88	4.24	4.85	5.46	5.87	Pressure
Underpressure	3.29	3.48	3.66	3.84	4.14	4.43	4.45		2.36	2.60	2.84	3.08	3.31	3.55	3.56	Underpressure
Pressure	2.42	2.64	2.87	3.09	3.69	4.30	4.72	1.75	2.89	3.23	3.57	3.91	4.49	5.07	5.46	Pressure
Underpressure	3.04	3.21	3.37	3.54	3.65	3.77	3.78		2.00	2.20	2.40	2.61	3.01	3.02	3.03	Underpressure
Pressure	2.26	2.49	2.71	2.94	3.51	4.08	4.47	2.00	2.69	3.01	3.32	3.64	4.20	4.75	5.11	Pressure
Underpressure	2.83	2.98	3.12	3.27	3.28	3.28	3.29		1.74	1.92	2.09	2.27	2.45	2.63	2.63	Underpressure
Pressure	2.13	2.36	2.58	2.81	3.35	3.90	4.27	2.25	2.51	2.81	3.11	3.41	3.94	4.46	4.80	Pressure
Underpressure	2.66	2.81	2.89	2.90	2.90	2.91	2.91		1.54	1.69	1.85	2.00	2.32	2.33	2.33	Underpressure
Pressure	2.01	2.23	2.46	2.69	3.21	3.73	4.09	2.50	2.36	2.65	2.93	3.22	3.71	4.19	4.51	Pressure
Underpressure	2.52	2.59	2.59	2.60	2.60	2.61	2.61		1.38	1.52	1.66	1.80	2.08	2.09	2.09	Underpressure

\* Limited to 6 metres within the DTA