

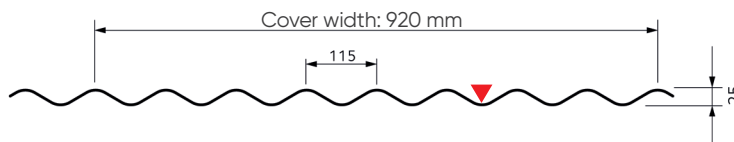
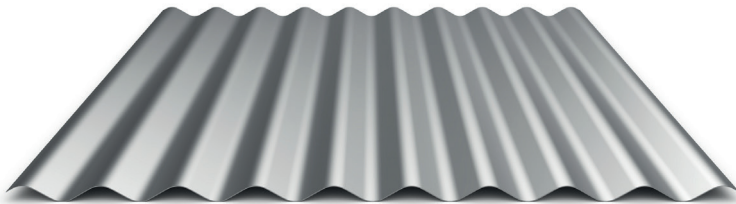
Frequency[®] 9.115.25T



ArcelorMittal

Corrugated roof sheet

Haironville (FR)



Minimum length 1,800 mm /
Maximum length 11,000 mm
Minimum thickness: 0.75 mm

2 obligatory overlapping corrugations, with or without Haircotherm[®]
* In case of Haircotherm[®]: the overlap corrugation at the end is not covered with regulator
Minimum slope 10% or 15% depending on the configuration of the roof

Characteristics

		THICKNESS (mm)						
					0.75	0.88	1.00	
According to PV Socotec N° GM 7497		Surface mass (kg/m ²)			7.58	8.90	10.11	
Action of descending loads	Moments of inertia (cm ⁴ /ml)	Single span		I2	6.88	8.08	9.18	
		Two equal spans		I3	5.11	5.99	6.81	
		Continuity		I _m	5.99	7.03	7.99	
	Bending moment (m.kN/ml)	In span	Elastic system	Md2T	2.05	2.41	2.74	
			Elasto-plastic system	Md3T	2.20	2.58	2.93	
Supported		Md3A	1.96	2.30	2.62			
		Under concentrated load		Mc	1.36	1.60	1.82	
		Support reaction (kN/ml)		Rd	7.68	9.02	10.25	
Action of ascending loads	Complete fixing at the top of the rib	Bending moment (m.kN/ml)	In span	Elastic system	Ma2T	2.03	2.38	2.70
				Elasto-plastic system	Ma3T	2.34	2.75	3.13
				Supported	Ma3A	1.25	1.47	1.67
		Breakout force at the support (kN/ml)		Sa	4.41	5.17	5.88	

Useful spans under the action of climatic loads for equal spans

Frequency [®] 9.115.25T	Permanent loads (kN/m ²)	2 SUPPORTS			3 SUPPORTS			4 SUPPORTS			
		0.75	0.88	1.00	0.75	0.88	1.00	0.75	0.88	1.00	
Descending loads	0.45	2.30	2.40	2.45	2.80	2.90	3.05	2.70	2.85	2.95	
	0.55	2.15	2.25	2.35	2.65	2.75	2.85	2.55	2.65	2.75	
	0.65	2.05	2.15	2.20	2.50	2.65	2.75	2.45	2.55	2.65	
	0.75	1.95	2.05	2.15	2.40	2.50	2.60	2.30	2.45	2.55	
	0.90	1.85	1.95	2.00	2.25	2.40	2.50	2.20	2.30	2.40	
	1.00	1.80	1.90	1.95	2.20	2.30	2.40	2.15	2.25	2.30	
	1.25	1.65	1.75	1.85	2.05	2.15	2.25	2.00	2.10	2.15	
	1.50	1.60	1.65	1.75	1.95	2.05	2.10	1.85	1.95	2.05	
	1.75	1.50	1.60	1.65	1.85	1.95	2.00	1.80	1.90	1.95	
	2.00	1.45	1.50	1.60	1.75	1.85	1.95	1.70	1.80	1.85	
Ascending loads	Complete fixing at the top of the rib	2.25	1.40	1.45	1.50	1.70	1.80	1.85	1.65	1.75	1.80
		2.50	1.35	1.40	1.45	1.65	1.75	1.80	1.60	1.65	1.75
		0.75	2.30	2.40	2.45	2.80	2.90	3.05	2.70	2.85	2.95
		1.00	2.30	2.40	2.45	2.80	2.90	3.05	2.70	2.85	2.95
		1.25	2.30	2.40	2.45	2.45	2.90	3.05	2.70	2.85	2.95
		1.50	2.05	2.40	2.45	2.05	2.40	2.75	2.25	2.65	2.95
		2.00	1.50	1.80	2.05	1.50	1.80	2.05	1.65	1.95	2.25

Span table according to French norms