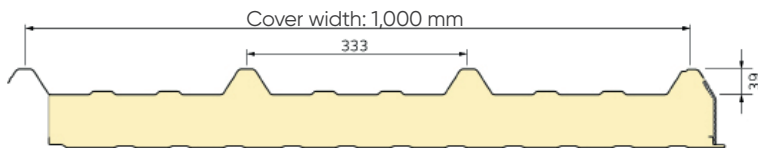
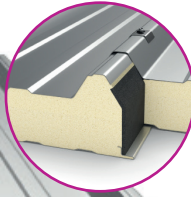
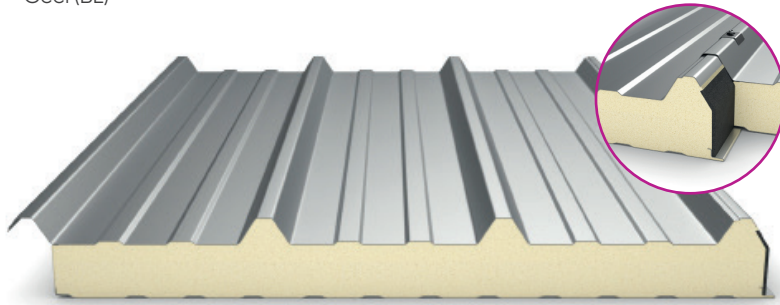


Ondatherm[®] T



PIR Roof composite panel

Geel (BE)



Characteristics of the panel

		NOMINAL CORE THICKNESSES (mm)							
		30	40	50	60	80	100	120	140
Dimensions	Thickness of outside (mm)	0.50 - 0.60 - 0.75							
	Thickness of inside (mm)	0.40* - 0.50 - 0.60							
	Overall length (mm)	Minimum 2,500 / Maximum 15,500 Shorter lengths up to 200 mm are available on request. Longer, up to 18,000 mm, available on request.							
	Defoaming (mm)	80 - 100 - 150 - 200 - 300							
Weight (kg/m ²)	Ex. in standard thicknesses 0.60 / 0.40 mm	10.39	10.79	11.19	11.59	12.39	13.19	13.99	14.79
Acoustic	Insulation: attenuation index (60 mm)	Rw (C;Ctr) : 25 (-1;-3) dB							
Reaction to fire	Euroclass according to NF EN 13501-1	B-s1,d0 ⁽¹⁾							
Thermal Performance	Thermal resistance Rc (m ² .K/W) - Acermi	1.35	1.80	2.25	2.65	3.55	4.40	5.30	6.15
	Thermal transmittance Uc (W/m ² .K)	0.683	0.526	0.428	0.360	0.274	0.222	0.186	0.160
Polyisocyanurate foam insulation	Density (kg/m ³)	40 (± 5 kg/m ³)							

* Only in combination with 0.60 mm or 0.75 mm outer cladding



⁽¹⁾ Excluding Keyron coating on the inside face for internal fire performance



Span table according to French norms

Table of use

Permissible spans in metres for cladding thicknesses **0.60 / 0.40** mm for panels fixed at each top of rib and on all supports with a Pk/gm of fixings ≥ 0.37 kN

	2 SUPPORTS 								Span (kN/m ²)	3 SUPPORTS 								
	Thickness of the panel (mm)									Thickness of the panel (mm)								
	30	40	50	60	80	100	120	140		30	40	50	60	80	100	120	140	
Pressure	3.58	4.28	4.66	4.98	5.98	6.72	7.00	7.00	0.50	3.58	5.06	6.06	6.54	7.00	7.00	7.00	7.00	Pressure
Underpressure	3.58	4.75	5.05	5.56	6.57	6.82	7.00	7.00		4.03	5.22	5.81	6.06	6.50	7.00	7.00	7.00	7.00
Pressure	3.58	4.04	4.39	4.70	5.64	6.32	6.96	7.00	0.60	3.58	5.06	5.70	6.13	7.00	7.00	7.00	7.00	Pressure
Underpressure	3.58	4.75	5.05	5.56	6.57	6.82	7.00	7.00		4.03	5.22	5.81	6.06	6.50	7.00	7.00	7.00	7.00
Pressure	3.41	3.84	4.18	4.47	5.35	6.00	6.60	7.00	0.70	3.58	4.90	5.38	5.80	6.88	7.00	7.00	7.00	Pressure
Underpressure	3.58	4.75	5.05	5.56	6.57	6.82	7.00	7.00		4.03	5.22	5.81	6.06	6.21	6.30	6.39	6.45	7.00
Pressure	3.27	3.68	4.00	4.28	5.11	5.74	6.29	6.74	0.80	3.58	4.68	5.13	5.51	6.53	7.00	7.00	7.00	Pressure
Underpressure	3.58	4.75	5.05	5.56	6.57	6.82	7.00	7.00		4.03	5.22	5.26	5.29	5.30	5.36	5.42	5.47	7.00
Pressure	3.15	3.54	3.85	4.11	4.91	5.50	6.02	6.52	0.90	3.58	4.48	4.91	5.27	6.23	7.00	7.00	7.00	Pressure
Underpressure	3.58	4.75	5.05	5.56	6.50	6.82	7.00	7.00		4.03	4.58	4.60	4.62	4.62	4.67	4.71	4.75	7.00
Pressure	3.04	3.41	3.72	3.97	4.74	5.31	5.80	6.31	1.00	3.58	4.31	4.73	5.07	5.96	6.69	7.00	7.00	Pressure
Underpressure	3.58	4.69	5.05	5.39	6.14	6.81	7.00	7.00		4.02	4.06	4.08	4.10	4.09	4.13	4.17	4.20	7.00
Pressure	2.92	3.30	3.60	3.85	4.59	5.13	5.59	6.09	1.10	3.58	4.17	4.57	4.89	5.74	6.41	6.93	7.00	Pressure
Underpressure	3.58	4.45	4.81	5.13	5.84	6.47	6.66	6.92		3.63	3.66	3.67	3.69	3.68	3.71	3.74	3.77	7.00
Pressure	2.80	3.19	3.48	3.73	4.44	4.98	5.42	5.88	1.20	3.52	4.04	4.41	4.74	5.53	6.16	6.66	6.89	Pressure
Underpressure	3.58	4.25	4.59	4.90	5.57	6.05	6.03	6.06		3.29	3.32	3.33	3.34	3.34	3.36	3.38	3.39	7.00
Pressure	2.71	3.09	3.37	3.62	4.32	4.84	5.26	5.69	1.30	3.39	3.89	4.28	4.59	5.35	5.94	6.42	6.61	Pressure
Underpressure	3.58	4.08	4.39	4.70	5.33	4.51	5.51	5.55		3.02	3.04	3.05	3.06	3.05	3.07	3.09	3.10	7.00
Pressure	2.62	3.00	3.28	3.50	4.21	4.72	5.11	5.46	1.40	3.28	3.77	4.14	4.44	5.19	5.74	6.21	6.35	Pressure
Underpressure	3.58	3.93	4.23	4.51	5.06	5.09	5.08	5.11		2.79	2.81	2.82	2.83	2.81	2.83	2.85	2.86	7.00
Pressure	2.54	2.91	3.19	3.41	4.10	4.60	4.98	5.32	1.50	3.18	3.65	4.01	4.31	5.04	5.56	6.01	6.14	Pressure
Underpressure	3.47	3.79	4.08	4.35	4.70	4.73	4.70	4.72		2.60	2.61	2.62	2.62	2.61	2.62	2.64	2.65	7.00
Pressure	2.35	2.73	3.00	3.22	3.85	4.31	4.70	5.10	1.75	2.96	3.39	3.74	4.02	4.70	5.18	5.59	5.79	Pressure
Underpressure	3.25	3.55	3.82	4.08	4.10	4.12	4.10	4.12		2.21	2.21	2.21	2.22	2.21	2.21	2.23	2.24	7.00
Pressure	2.21	2.58	2.84	3.05	3.64	4.08	4.46	4.83	2.00	2.68	3.19	3.51	3.78	4.41	4.86	5.25	5.53	Pressure
Underpressure	2.99	3.26	3.42	3.43	3.44	3.46	3.44	3.45		1.93	1.93	1.93	1.94	1.92	1.93	1.93	1.94	7.00
Pressure	2.10	2.45	2.71	2.92	3.46	3.88	4.24	4.71	2.25	2.39	2.85	3.30	3.59	4.17	4.60	4.97	5.15	Pressure
Underpressure	2.73	3.00	3.05	3.06	3.08	3.11	3.09	3.10		1.61	1.77	1.90	1.92	1.90	1.91	1.91	1.91	7.00
Pressure	2.00	2.34	2.60	2.80	3.31	3.71	4.04	4.34	2.50	2.16	2.58	2.99	3.28	3.94	4.37	4.72	4.93	Pressure
Underpressure	2.34	2.61	2.66	2.73	2.73	2.75	2.73	2.73		1.41	1.58	1.72	1.83	1.81	1.82	1.82	1.82	7.00

* Limited to 6 metres within the DTA