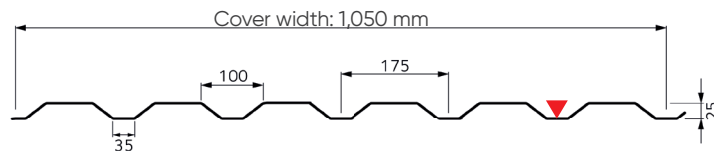
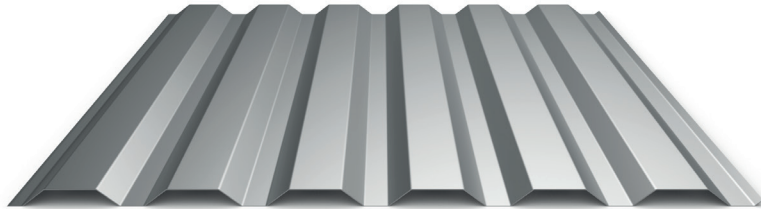


Trapeza[®] 6.175.25



Profiled sheet for single and double skin cladding

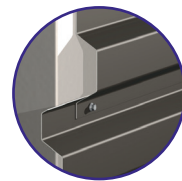
Haironville (FR)



- Shorter lengths up to 200 mm are available on request.
- Minimum length 1,800 mm / Maximum length 13,000 mm
- Maximum length recommended for horizontal installation : 1,500 mm
- Minimum thickness for horizontal installation: 0.75 mm

Surface mass

Thickness (mm)	0.63	0.75	0.88	1.00	1.25
Mass (kg/m ²)	5.58	6.64	7.80	8.86	11.07



Overlap

Table of maximum permissible loads in kN/m² as a function of the working spans

For horizontal single skin installations, the span is limited to 2.5 m.

PV Socotec DM 7163		2 SUPPORTS		Span (m)	3 SUPPORTS		
		Thickness (mm)			Thickness (mm)		
		0.63	0.75		0.63	0.75	
Single & double skin	Pressure	1.36	1.48	≤ 1.70	2.00	2.00	Pressure
	Underpressure	1.18	1.31		2.00	2.00	Underpressure
	Pressure	1.18	1.28	1.80	2.00	2.00	Pressure
	Underpressure	1.03	1.14		2.00	2.00	Underpressure
	Pressure	1.03	1.11	1.90	1.97	2.00	Pressure
	Underpressure	0.91	1.00		1.81	2.00	Underpressure
	Pressure	0.91	0.98	2.00	1.75	2.00	Pressure
Underpressure	0.80	0.88	1.60		2.00	Underpressure	
Single skin	Pressure	0.71	0.77	2.20	1.41	1.62	Pressure
	Underpressure	0.64	0.69		1.28	1.24	Underpressure
	Pressure	0.57	0.62	2.40	1.15	1.23	Pressure
	Underpressure	0.52	0.56		1.04	1.06	Underpressure
	Pressure	0.47	0.51	2.60	0.94	0.96	Pressure
	Underpressure	0.43	0.46		0.83	0.87	Underpressure
	Pressure		0.45	2.80	0.73	0.75	Pressure
	Underpressure		0.43		0.67	0.70	Underpressure
	Pressure			3.00	0.58	0.60	Pressure
	Underpressure				0.55	0.57	Underpressure
	Pressure			3.20	0.46	0.48	Pressure
	Underpressure				0.45	0.48	Underpressure