

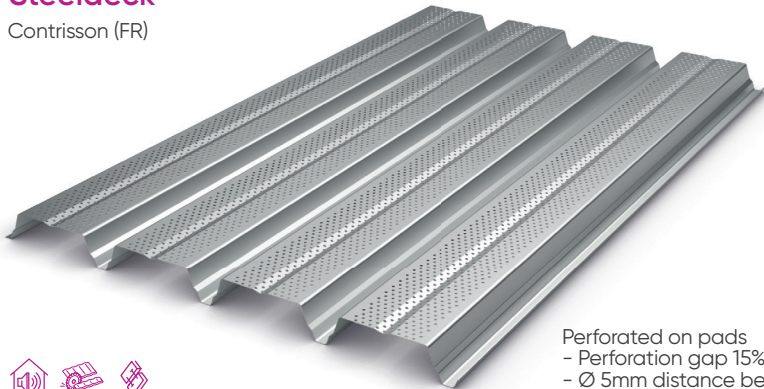
Hacierco® 4.222.56P



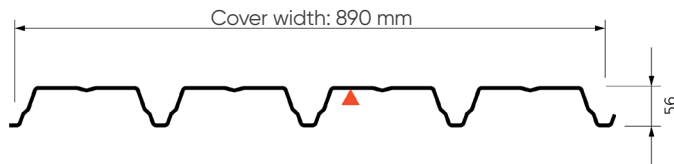
ArcelorMittal

Steeldeck

Contrisson (FR)



Perforated on pads
 - Perforation gap 15%
 - Ø 5mm distance between track centres 12.5mm



- Profile length:
- Minimum 1,800 mm / Maximum 15,000 mm
- Valley opening: 70 mm
- Bottom of rib: 20 mm
- Shorter lengths up to 1,250 mm are available on request.

Characteristics

			THICKNESS (mm)					
			0.75	0.88	1.00	1.25		
Action of descending loads	Surface mass (kg/m ²)		7.37	8.65	9.83	12.29		
	Moments of inertia (cm ⁴ /m)	Single span	I2	45.55	53.45	60.74	75.92	
		Two equal spans	I3	39.08	45.86	52.11	65.14	
		Continuity	Im	42.32	49.65	56.42	70.53	
	Bending moment (m.kN/m)	In span	Elastic system	Md2T	3.55	4.17	4.74	5.92
			Elasto-plastic system	Md3T	4.45	5.22	5.93	7.41
		Supported	Md3A	3.81	4.47	5.08	6.35	
		Under concentrated load	Mc	2.62	3.08	3.50	4.37	

Table of use for equal spans with loads expressed in kN/m²

Hacierco® 4.222.56P - According to PV SOCOTEC LG 3765

Variable load	Permanent loads	Total of descending loads	2 SUPPORTS ▲—▲				3 SUPPORTS ▲—▲—▲				4 SUPPORTS ▲—▲—▲—▲			
			0.75	0.88	1.00	1.25	0.75	0.88	1.00	1.25	0.75	0.88	1.00	1.25
1.00	0.10	1.10	3.10	3.25	3.40	3.65	4.00	4.20	4.40	4.70	3.75	3.95	4.10	4.45
1.00	0.15	1.15	3.10	3.25	3.40	3.65	4.00	4.20	4.40	4.70	3.75	3.95	4.10	4.40
1.00	0.20	1.20	3.05	3.25	3.35	3.60	3.95	4.15	4.35	4.65	3.70	3.90	4.05	4.35
1.00	0.25	1.25	3.05	3.20	3.30	3.55	3.90	4.10	4.25	4.60	3.70	3.85	4.00	4.30
1.00	0.30	1.30	3.00	3.15	3.30	3.50	3.85	4.05	4.20	4.50	3.65	3.80	3.95	4.25
1.00	0.35	1.35	2.95	3.10	3.25	3.45	3.80	4.00	4.15	4.45	3.60	3.75	3.95	4.20
1.00	1.00	2.00	2.60	2.75	2.85	3.05	3.35	3.55	3.70	3.95	3.15	3.35	3.45	3.70
1.00	1.50	2.50	2.45	2.55	2.65	2.85	2.95	3.30	3.45	3.70	2.95	3.10	3.25	3.45
1.25	0.25	1.50	2.85	3.00	3.15	3.35	3.70	3.90	4.05	4.35	3.45	3.65	3.80	4.05
1.50	0.25	1.75	2.70	2.85	2.95	3.20	3.50	3.65	3.85	4.10	3.25	3.45	3.60	3.90
1.75	0.25	2.00	2.55	2.70	2.80	3.05	3.30	3.50	3.65	3.90	3.10	3.30	3.40	3.70
2.00	0.25	2.25	2.45	2.60	2.70	2.90	3.15	3.35	3.50	3.75	2.95	3.15	3.25	3.55