

Roof Decking Profile (3.250.106)

EUROBASE 106 CD

SCOPE

Self-supporting roofing product for discontinuous laying made from metallic coated steel sheet with or without additional organic coatings.

MATERIAL (Steel)

CHARACTERISTIC	STAND. REF.	Thickness (mm)				
		0,75	0,80	0,88	1,00	1,20
Weight (kg/m ²)		9,81	10,47	11,51	13,08	15,70
I _g (cm ⁴ /ml)		179,580	192,227	212,461	242,813	293,399
W ₁ (cm ³ /ml)		27,600	29,543	32,650	37,311	45,077
W ₂ (cm ³ /ml)		43,870	46,962	51,911	59,335	71,715

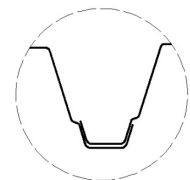
GEOMETRICAL CHARACTERISTICS

CHARACTERISTIC	VALUE	UNIT	TOLERANCE
Depth of profile (h)	106	mm	± 2,0
Depth of stiffeners	5	mm	± 1,0
Pitch	250	mm	± 4,0
Widths of crown and valley (b ₁ , b ₂)	(40, 130)	mm	+2,0/-1,0
Cover width (w)	0.750	mm	± h/10 (max.: 15 mm)
Radius of bends (r)	6	mm	+ 2,0 / 0,0
Deviation from straightness (δ)	≤ tolerance	mm	2,0 /m (max.: 10,0)
Deviation from squareness (s)	≤ tolerance	mm	≤ 0,5% of (w)
Length (l)	According to order ⁽¹⁾	mm	l ≤ 3.000 mm +10,0/-5,0 l > 3.000 mm + 20,0/-5,0
Deviation of side lap (D)	≤ tolerance	mm	± 2,0 on 500 mm
Curve radius and angles	---	°	---
Reaction to fire	Class A1 ⁽²⁾ / Class C-s3,d0 ⁽³⁾		

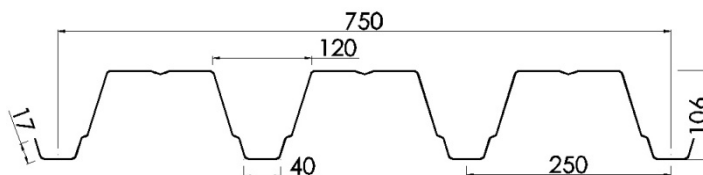


07
EN 14782:2006

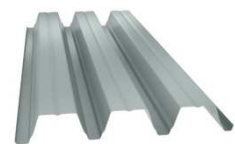
OVERLAP DETAIL



SECTION DETAIL



3D DETAIL





EXPERIMENTALS CHARACTERISTICS – Minimal support width 120 mm

In accordance with tests based on the standard NF P 34-503 controlled by SOCOTEC (DM 7563).

Moments		Thickness (mm)				
		0,75	0,80	0,88	1,00	1,20
Bending M. - Concentrated load (m · daN / m)	MC	352,42	375,91	413,51	469,90	563,87
M. of inertia - Simple beam (cm ⁴ / m)	I2	183,21	195,42	214,96	244,28	293,14
M. of inertia - Two equal spans (cm ⁴ / m)	I3	150,44	160,47	176,52	200,59	240,70
M. of inertia - Continuous beam (cm ⁴ / m)	Im	166,83	177,95	195,74	222,43	266,92
Bending M. - At beam - Sist. Elast. (m · daN / m)	M2T	757,98	808,51	889,37	1010,64	1212,77
Bending M. - At beam - Sist. Elast.-Plast. (m · daN / m)	M3T	784,31	836,60	920,26	1045,75	1254,90
Bending M. - At support (m · daN / m)	M3A	686,83	732,62	805,88	915,77	1098,93

PERMISSIBLE SPAN (m) – Limitation of deflection: L/200 – Minimal support width 120 mm

In accordance with French standard NF P 84-206 (DTU 43.3)

Variable actions (kN/m ²)	Permanent actions (kN/m ²)										
		Espesor (mm)									
		0,75	0,80	0,88	1,00	1,20	0,75	0,80	0,88	1,00	1,20
1,00	0,15	4,91	5,01	5,13	5,30	5,55	5,86	6,00	6,19	6,46	6,86
	0,20	4,86	4,95	5,10	5,30	5,55	5,75	5,93	6,19	6,46	6,86
	0,25	4,79	4,89	5,04	5,24	5,53	5,65	5,82	6,09	6,46	6,86
	1,00	4,14	4,22	4,35	4,53	4,79	4,59	4,73	4,95	5,26	5,73
1,25	0,15	4,56	4,66	4,81	5,01	5,25	5,33	5,50	5,75	6,00	6,37
	0,25	4,53	4,62	4,76	4,95	5,24	5,18	5,34	5,58	5,93	6,37
1,50	0,15	4,29	4,38	4,53	4,72	5,01	4,93	5,09	5,32	5,65	6,00
	0,25	4,29	4,38	4,53	4,72	5,00	4,81	4,96	5,19	5,51	6,00
	1,20	3,76	3,84	3,95	4,12	4,36	3,96	4,09	4,28	4,55	4,96
1,75	0,15	4,08	4,16	4,30	4,49	4,77	4,61	4,75	4,97	5,28	5,70
	0,25	4,08	4,16	4,30	4,49	4,77	4,51	4,65	4,86	5,17	5,63
2,00	0,15	3,90	3,98	4,11	4,29	4,56	4,34	4,48	4,69	4,98	5,43
	0,25	3,90	3,98	4,11	4,29	4,56	4,26	4,39	4,59	4,88	5,32

Equally spaced supports in continuous beams, with a maximum difference between adjacent span lower than 20%, in accordance with DTU 43.3.

For any further clarification, you can contact Technical Department (contact.export@arcelormittal.com or by phone).
EUROPERFIL, S.A. reserves the right to change this document without notice.