

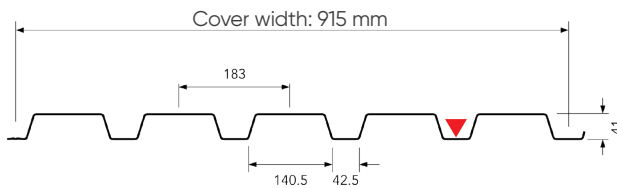
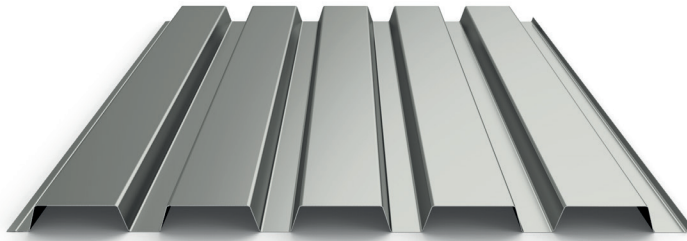
Trapeza® 5.183.40



ArcelorMittal

Profiled sheet for single or double skin cladding

Geel (BE)



Profile length :
Minimum 1,800 mm / Maximum 16,000 mm
Shorter lengths up to 200 mm are available on request.

Useful characteristics

		STANDARDS
Steel grade	S320 GD	EN 10346
Type of protection	galvanized	EN 10346
	pre-lacquered steel	EN 10169

Notes

For horizontal installation, we recommend a thickness of 0.75mm.
Colors and coatings according to our Colorissime.
The profile is standard lacquered on side A.
Please contact our sales department for non-standard colors and thicknesses.

Technical characteristics

Nominal thickness	mm	0,63	0,75	0,88	1
Weight	kg/m ²	6,59	7,85	9,21	10,47
RE	N/mm ²	280	280	280	280
Max. field moment	kg.m	144	180	213	249
Support moment max.	kg.m	146	186	226	257
Inertia I	cm ⁴	21,3	26,7	32,1	36,5
Flexural modulus W	cm ³	7,72	9,65	11,46	13,35
Support reaction	kg	2,570	3,500	4,960	5,810
Maximum length	m	14,5 *			

* Please contact us for longer lengths

Table of use

Trapeza® 5.183.40*	Permanent loads (kN/m ²)	2 SUPPORTS				3 SUPPORTS				4 SUPPORTS			
		0.63	0.75	0.88	1.00	0.63	0.75	0.88	1.00	0.63	0.75	0.88	1.00
Descending loads	0.60	2.84	3.06	3.26	3.40	3.81	4.10	4.36	4.55	3.60	3.88	4.13	4.31
	0.70	2.70	2.91	3.09	3.23	3.62	3.90	4.14	4.33	3.42	3.69	3.92	4.10
	0.80	2.58	2.78	2.96	3.09	3.46	3.73	3.96	4.14	3.27	3.53	3.75	3.92
	1.00	2.39	2.58	2.75	2.87	3.21	3.46	3.68	3.84	3.04	3.28	3.48	3.64
	1.20	2.25	2.43	2.58	2.70	3.02	3.26	3.46	3.62	2.86	3.08	3.28	3.42
	1.50	2.09	2.26	2.40	2.50	2.79	3.02	3.21	3.36	2.65	2.86	3.04	3.18

Span table according to French norms