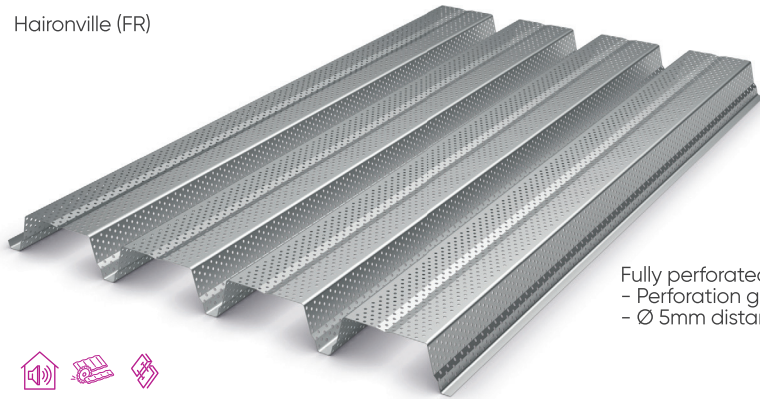


Hacierco® 4.214.74PT

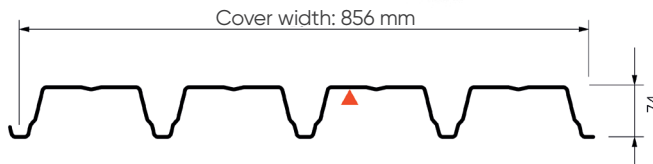


Steeldeck

Haironville (FR)



Fully perforated
 - Perforation gap 15%
 - Ø 5mm distance between track centres 12.5mm



- Profile length:
 - Minimum 1,800 mm / Maximum 22,000 mm
- Valley opening: 70 mm
- Bottom of rib: 24 mm
 Shorter lengths up to 1,250 mm are available on request.

Characteristics

		THICKNESS (mm)						
		0.75	0.88	1.00	1.25			
Action of descending loads	Surface mass (kg/m ²)	795						
	Moments of inertia (cm ⁴ /m)	Single span	I2	0.57	0.67	0.76	0.95	
		Two equal spans	I3	0.45	0.52	0.59	0.74	
		Continuity	Im	0.51	0.60	0.68	0.85	
	Bending moment (m.kN/m)	In span	Elastic system	Md2T	3.10	3.64	4.14	5.17
			Elasto-plastic system	Md3T	3.68	4.32	4.90	6.13
		Supported	Md3A	3.30	3.87	4.40	5.50	
		Under concentrated load	Mc	2.58	3.03	3.45	4.31	

Table of use for equal spans with loads expressed in kN/m²

Hacierco® 4.214.74PT - According to PV SOCOTEC MG 3310

Variable load	Permanent loads	Total of descending loads	2 SUPPORTS ▲—▲				3 SUPPORTS ▲—▲—▲				4 SUPPORTS ▲—▲—▲—▲			
			0.75	0.88	1.00	1.25	0.75	0.88	1.00	1.25	0.75	0.88	1.00	1.25
1.00	0.10	1.10	3.35	3.50	3.65	3.95	4.10	4.40	4.55	4.95	4.00	4.20	4.40	4.70
1.00	0.15	1.15	3.35	3.50	3.65	3.90	4.05	4.35	4.55	4.90	4.00	4.20	4.40	4.70
1.00	0.20	1.20	3.30	3.50	3.60	3.85	3.95	4.25	4.50	4.85	3.95	4.15	4.30	4.65
1.00	0.25	1.25	3.25	3.45	3.55	3.80	3.90	4.20	4.45	4.75	3.90	4.10	4.25	4.55
1.00	0.30	1.30	3.20	3.40	3.55	3.80	3.85	4.15	4.40	4.70	3.85	4.05	4.20	4.50
1.00	0.35	1.35	3.20	3.35	3.50	3.75	3.75	4.05	4.30	4.65	3.80	4.00	4.15	4.45
1.00	1.00	2.00	2.80	2.95	3.10	3.30	3.15	3.40	3.60	4.05	3.25	3.50	3.70	3.95
1.00	1.50	2.50	2.60	2.75	2.85	3.10	2.80	3.10	3.25	3.65	2.80	3.15	3.35	3.70
1.25	0.25	1.50	3.10	3.25	3.35	3.60	3.55	3.85	4.10	4.50	3.65	3.90	4.05	4.30
1.50	0.25	1.75	2.90	3.05	3.20	3.45	3.30	3.55	3.80	4.20	3.40	3.65	3.85	4.10
1.75	0.25	2.00	2.75	2.90	3.05	3.30	3.10	3.35	3.55	3.95	3.15	3.40	3.65	3.90
2.00	0.25	2.25	2.65	2.80	2.90	3.15	2.90	3.15	3.35	3.75	2.90	3.25	3.45	3.75