

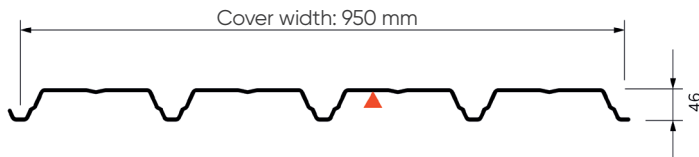
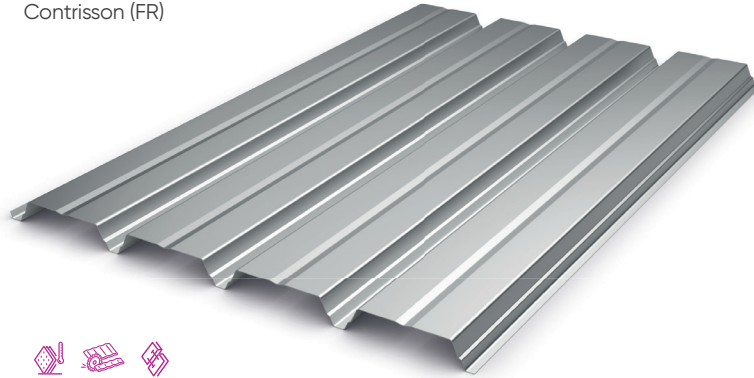
Hacierco® 4.237.46



ArcelorMittal

Steeldeck

Contrisson (FR)



- Profile length:
- Minimum 1,800 mm / Maximum 15,000 mm
- Valley opening: 70 mm
- Bottom of rib: 20 mm
- Shorter lengths up to 200 mm are available on request.

Characteristics

			THICKNESS (mm)					
			0.75	0.88	1.00	1.25		
Action of descending loads	Surface mass (kg/m ²)		7.34	8.62	9.79	12.24		
	Moments of inertia (cm ⁴ /m)	Single span	I2	32.15	37.72	42.87	53.59	
		Two equal spans	I3	28.42	33.35	37.89	47.37	
		Continuity	Im	30.29	35.54	40.38	50.48	
	Bending moment (m.kN/m)	In span	Elastic system	Md2T	2.48	2.91	3.31	4.13
			Elasto-plastic system	Md3T	2.95	3.46	3.94	4.92
		Supported	Md3A	2.63	3.08	3.50	4.38	
		Under concentrated load	Mc	2.04	2.39	2.72	3.40	

Table of use for equal spans with loads expressed in kN/m²

Hacierco® 4.237.46 - According to PV SOCOTEC KM 7534

Variable load	Permanent loads	Total of descending loads	2 SUPPORTS ▲—▲				3 SUPPORTS ▲—▲—▲				4 SUPPORTS ▲—▲—▲—▲			
			0.75	0.88	1.00	1.25	0.75	0.88	1.00	1.25	0.75	0.88	1.00	1.25
1.00	0.10	1.10	2.75	2.90	3.05	3.25	3.60	3.75	3.95	4.25	3.35	3.55	3.70	3.95
1.00	0.15	1.15	2.75	2.90	3.05	3.25	3.60	3.75	3.95	4.20	3.35	3.55	3.70	3.95
1.00	0.20	1.20	2.75	2.85	3.00	3.20	3.55	3.75	3.90	4.15	3.35	3.50	3.65	3.90
1.00	0.25	1.25	2.70	2.85	2.95	3.15	3.50	3.70	3.85	4.10	3.30	3.45	3.60	3.85
1.00	0.30	1.30	2.65	2.80	2.90	3.10	3.45	3.65	3.80	4.05	3.25	3.40	3.55	3.80
1.00	0.35	1.35	2.65	2.75	2.90	3.10	3.40	3.60	3.75	4.00	3.20	3.40	3.50	3.75
1.00	1.00	2.00	2.30	2.45	2.55	2.75	2.80	3.05	3.25	3.55	2.80	3.00	3.10	3.35
1.00	1.50	2.50	2.15	2.30	2.35	2.55	2.30	2.65	2.95	3.25	2.30	2.65	2.90	3.10
1.25	0.25	1.50	2.55	2.70	2.80	3.00	3.20	3.45	3.65	3.90	3.10	3.25	3.40	3.65
1.50	0.25	1.75	2.40	2.55	2.65	2.85	2.95	3.20	3.40	3.70	2.95	3.10	3.20	3.45
1.75	0.25	2.00	2.30	2.40	2.50	2.70	2.70	3.00	3.20	3.50	2.70	2.95	3.05	3.30
2.00	0.25	2.25	2.20	2.30	2.40	2.60	2.40	2.80	3.00	3.35	2.40	2.80	2.95	3.15